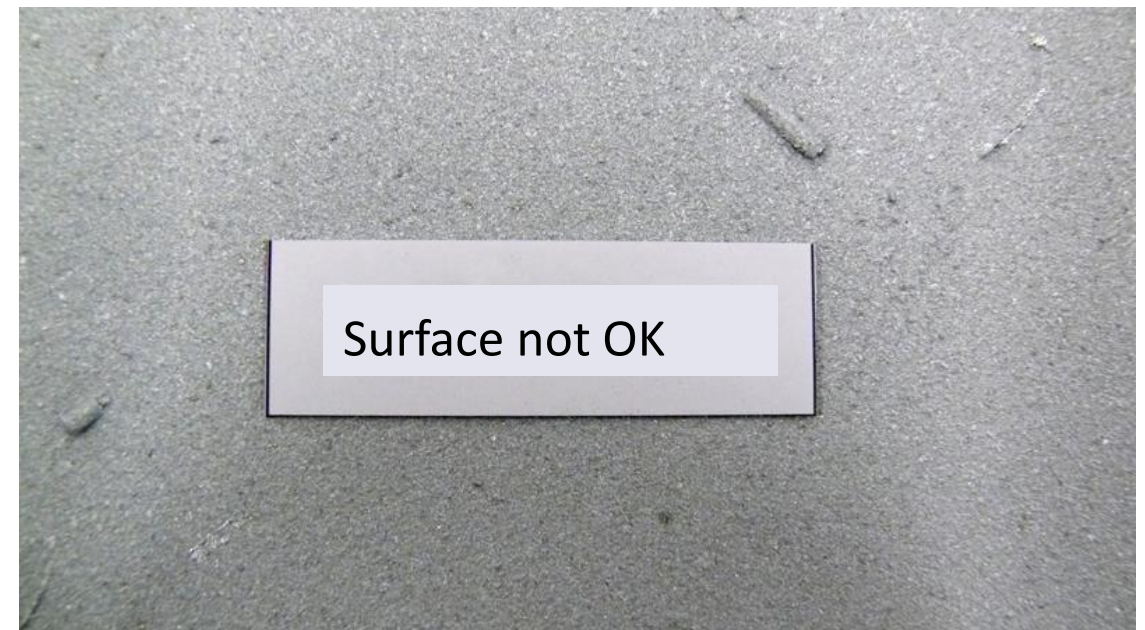


QUALITY CONTROL OF THERMALLY SPRAYED COATINGS

VISUAL INSPECTION ACCORDING TO ISO 2063:2017 1-2

The coating surface must have a consistent appearance, without inclusions or blank areas and free of non-adhesive material or damages.

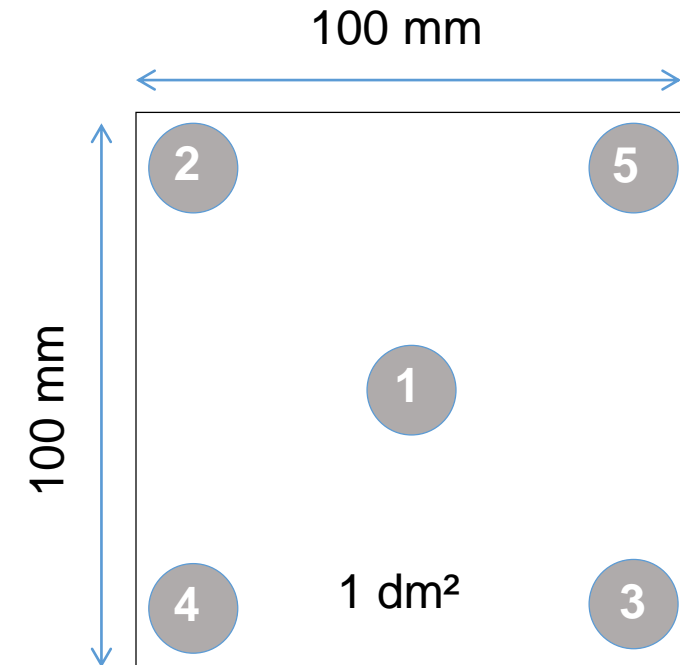


QUALITY CONTROL OF THERMALLY SPRAYED COATINGS

MEASUREMENT OF THE COATING THICKNESS ACCORDING TO ISO 2063



Magnetic induction measuring device according to EN ISO 2178



Check points related to an area of 1 dm²

QUALITY CONTROL OF THERMALLY SPRAYED COATINGS

MEASUREMENT OF THE COATING ADHESION ACCORDING TO ISO 4624



Mobile automatic pull-off adhesion device



Bonding of test pieces and cutting free of glue and coating.



Pulling of the test pieces



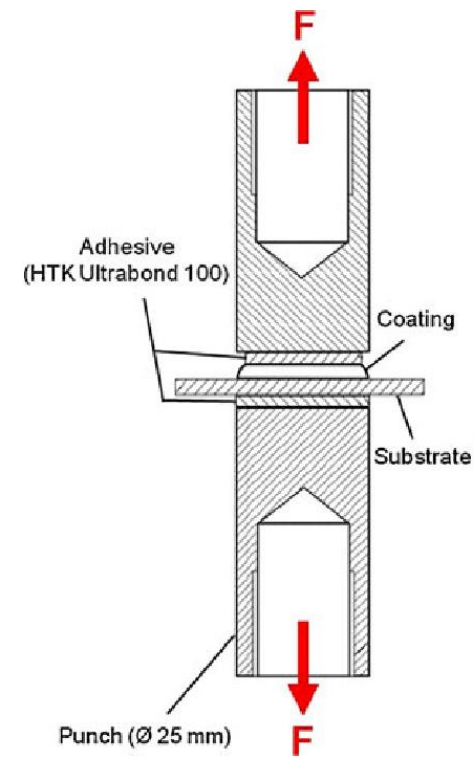
Pulled off test piece

QUALITY CONTROL OF THERMALLY SPRAYED COATINGS

MEASUREMENT OF THE COATING ADHESION ACCORDING TO ISO 4624



Stationary tension testing



QUALITY CONTROL OF THERMALLY SPRAYED COATINGS

CROSS SECTION POLISH ACCORDING TO ISO 1463

Microscopical analysis of a cross-section polish of a test sample, has to be carried out to the standard EN ISO 1463

